



THINKWATER



13. Green Point Urban Park

EDITION 9

This printed Green Map presents a selection of options – for more listings, further information and current news please visit www.capetowngreenmap.co.za



CapeTown Green Map encourages you to live and play more sustainably, and to make greener lifestyle choices. All sites are listed free on www.capetowngreenmap.co.za. If you meet the criteria, please submit your information online and stand the chance of being featured on the website and in future print editions.

@capetowngreenmap
Capetowngreenmap



The Cape Town Green Map grew out of Green Goal 2010, the award-winning environmental programme of the 2010 FIFA World Cup™.

Aerial Photos: Bruce Sutherland | City of Cape Town



The CapeTown Green Map is part of Green Map System's global community of local green maps found online. All print maps, including CapeTown's, are archived in the New York Public Library. www.opengreenmap.org

Icons © Green Map System, Inc. 2009. All rights reserved. Green Map™ is a registered trademark and used with permission.



The 2030 Agenda for Sustainable Development, adopted by all United Nations Member States in 2015, provides a shared blueprint for peace and prosperity for people and the planet, now and into the future. At its heart are the 17 Sustainable Development Goals (SDGs), which are an urgent call for action by all countries - developed and developing - in a global partnership. Goal 6 focuses on Clean Water and Sanitation. www.sustainabledevelopment.un.org



Cape Town Tourism
CapeTown Live it! Love it! GREENER!
www.capetown.travel



Publishers of special interest maps partnering with the City to bring you the CapeTown Green Map. To view all their maps visit www.mapmyway.co.za
T +27 83 783 1003
E philip@mapmyway.co.za

THE GREAT GREEN OUTDOORS
Sustaining Cape Town's Water Supply

Cape Town is a water-scarce city that is diversifying its sources of water, but it still gets most of its water from rain-fed dams. The catchment areas feeding our dams are relatively pristine, but need to be preserved. The alien invasive plants in the catchments suck up water before it can get to our dams, and there are programmes to remove them to increase the yield of water to the Western Cape water supply system.

Cape Town has one of the highest densities of threatened plant species in any metropolitan area on earth, so these plants need to be protected. Cape Town lies within a "biodiversity hotspot", the Cape floristic region, and is recognised globally for its extraordinarily rich, diverse and unique fauna and flora.

The protected areas are conserving critically endangered ecosystems that sustain the flora, fauna and ecosystem services we are dependent on, including the valuable water catchments, rivers, groundwater recharge areas, recreational and storage water bodies.

The City's substantial network of rivers and wetlands perform a dual function, acting as a habitat for aquatic fauna and flora, as well as a natural infrastructure asset for the management, treatment and conveyance of storm water and treated wastewater effluent.

'Mountain of the Sea' is a literal translation of the Khoi word, Hoerikwaggo, regarded as the earliest known description of Table Mountain. It was the supply of fresh water from the springs that attracted the Dutch East India Company to establish a half-way house to supply water and fresh produce for their ships travelling between Holland and the Far East. The Company's Garden (see 8) is the remaining half of the Dutch vegetable garden planted in the 1650's and overlaid by a later Victorian 'romantic garden'. Recently, an area has been rehabilitated to recreate the original produce garden, which now supplies The Company's Garden Restaurant.

Until 1897, Cape Town relied on spring river water, flowing off Table Mountain, which usually reduced to a trickle in the summer months. This supply challenge changed with the construction of Cape Town's first dam in 1896, the 954 ML Woodhead Dam (see 9) on Table Mountain.

These days, the city has access to water storage of nearly 1 000 times greater capacity - provided by 14 dams - and is integrated into the Western Cape supply system. The six large dams: the Theewaterskloof, Voëlvléi, Berg River, Wammerhoek, and the Steenbras Upper and Lower dams form part of an integrated and collectively managed system of 14 dams, 785 pump stations, 35 treatment plants, 35 reservoirs, over 20 300 kilometres of pipelines and tunnels, and about 2 400 kilometres of waterways (see 31, 32 and 33).

In addition to servicing Cape Town, the system supplies water to towns in the Overberg, Boland, West Coast and Swartland areas, as well as providing irrigation water for agriculture. The mountain catchments of Cape Town and the Western Cape are protected to ensure the sustainable supply of fresh water into the integrated water supply system.

As one of the few cities in the world with a national park and two World Heritage Sites (Table Mountain National Park and Robben Island) contained within its boundaries, Cape Town is surrounded by incredible outdoor options.

Here is a selection of places to visit which will introduce you to the Great Green Outdoors and Water-Wise Cape Town.

City Nature Reserves

The City of Cape Town's nature reserves and conservation areas are conserving critically endangered ecosystems. The City's nature reserves protect valuable water catchments, groundwater recharge areas and recreational waterbodies.

Emergencies 021 480 7700 Visit www.capetown.gov.za

Table Mountain National Park

The park is an important national asset, international tourist destination and local recreation resource, and is one of eight sights that constitute the Cape Floral Region World Heritage Site.

T 021 712 7471 Emergencies 0861 106 417 Visit: www.sanparks.org
E TableM@sanparks.org

CapeNature

CapeNature plays a crucial role in ensuring the Western Cape has a sustainable supply of clean, fresh and potable water to support our population and a growing economy. Integrated catchment management is holistic, focusing on both water and land management, as the two are inextricably connected.

T 087 087 8250 Visit www.capenature.co.za

THINKWATER

FOR MORE VISIT CAPETOWN.GOV.ZA / THINKWATER
FOLLOW @CITYOFCT ON FACEBOOK AND TWITTER

WATER REPORTING

To report burst pipes, faulty meters and water wastage: Call 0860 103 089 • SMS 31373 (maximum 160 characters)
Email water@capetown.gov.za
Visit www.capetown.gov.za / servicerequests
WhatsApp 063 407 3699



Only flush when you really need to.



Take short, stop-start showers.



Don't leave the tap running while brushing teeth.

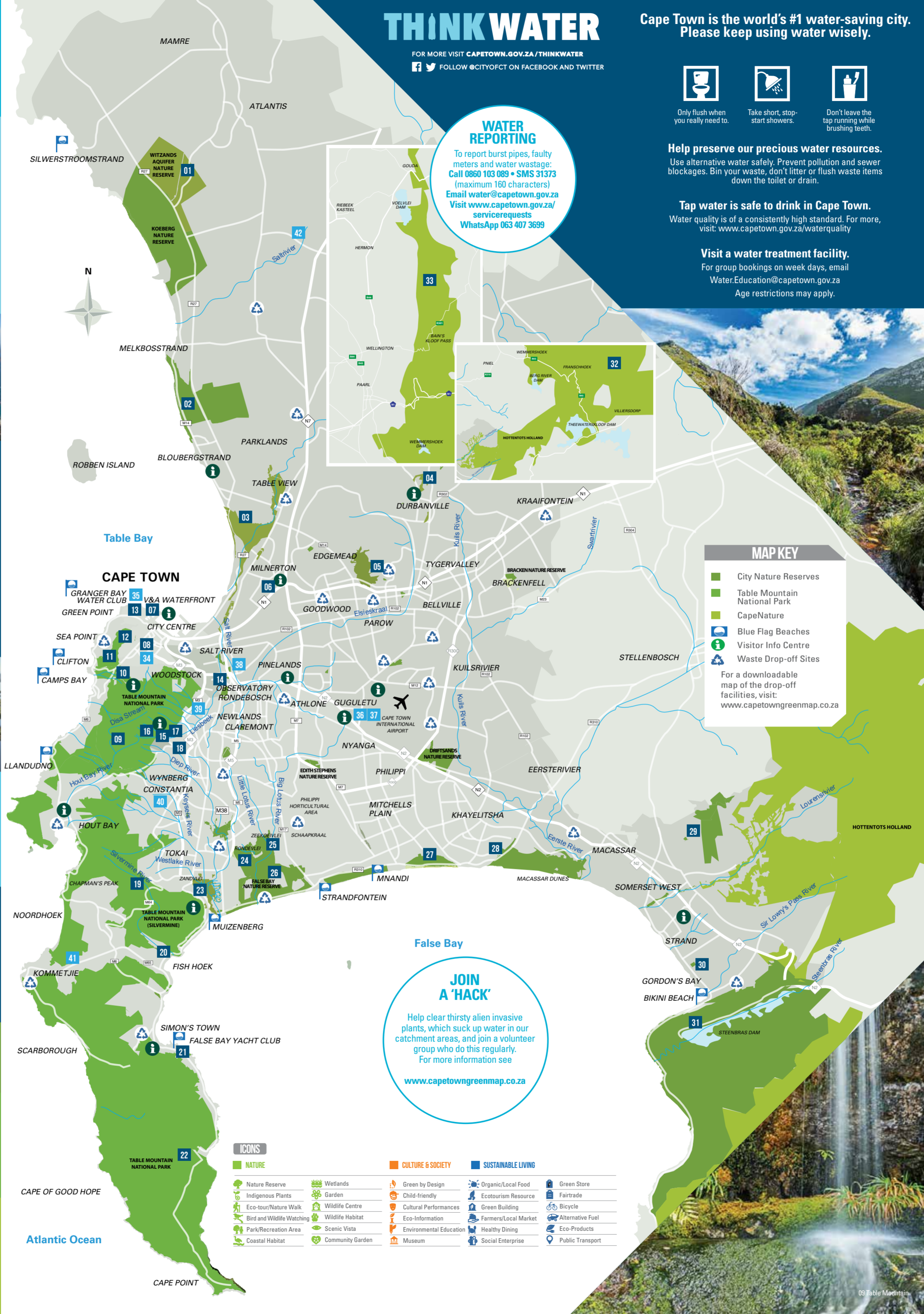
Help preserve our precious water resources. Use alternative water safely. Prevent pollution and sewer blockages. Bin your waste, don't litter or flush waste items down the toilet or drain.

Tap water is safe to drink in Cape Town.

Water quality is of a consistently high standard. For more, visit: www.capetown.gov.za/waterquality

Visit a water treatment facility.

For group bookings on week days, email Water.Education@capetown.gov.za
Age restrictions may apply.



MAP KEY

- City Nature Reserves
Table Mountain National Park
CapeNature
Blue Flag Beaches
Visitor Info Centre
Waste Drop-off Sites

For a downloadable map of the drop-off facilities, visit: www.capetowngreenmap.co.za

JOIN A 'HACK'

Help clear thirsty alien invasive plants, which suck up water in our catchment areas, and join a volunteer group who do this regularly. For more information see

www.capetowngreenmap.co.za

ICONS

- NATURE: Nature Reserve, Indigenous Plants, Eco-tour/Nature Walk, Bird and Wildlife Watching, Park/Recreation Area, Coastal Habitat
Wetlands, Garden, Wildlife Centre, Wildlife Habitat, Scenic Vista, Community Garden
CULTURE & SOCIETY: Green by Design, Child-friendly, Cultural Performances, Eco-Information, Environmental Education, Museum
SUSTAINABLE LIVING: Organic/Local Food, Ecotourism Resource, Green Building, Farmers/Local Market, Healthy Dining, Social Enterprise, Green Store, Fairtrade, Bicycle, Alternative Fuel, Eco-Products, Public Transport

01 WITZANDS AQUIFER NATURE RESERVE

Protecting the Atlantis aquifer and the aquifer re-charge areas, it is the main water supply for the Atlantis, Mamre and Pella communities. The reserve has impressive sand dunes and views of Table Mountain. Add on a visit to the quaint mission village of Mamre, established in the 17th century. The original water mill has been restored and is used as a museum today.



Off Dassenberg Drive (R307), Atlantis
T 021 444 7687
E witzandsnature.reserve@capetown.gov.za

02 BLAAUWBERG NATURE RESERVE

Stay in accommodation with the only view in the world from which you can see two proclaimed World Heritage sites.



Otto du Plessis Drive (M14), north of Bloubergstrand
T 021 444 0454
E blaauwberg.naturereserve@capetown.gov.za

03 TABLE BAY NATURE RESERVE RIETVLEI SECTION

The Rietvlei Wetland is in the floodplain of the Diep River and drains into Table Bay via the Milnerton Lagoon. The wetland offers a variety of habitats, including a permanent freshwater lake, shallow marshes that flood in winter, reed beds, a river, and an estuarine lagoon with salt marshes that is open to the sea.



Main entrance: south end Grey Ave Table View (Rietvlei Section)
T 021 444 0315
E tablebay.naturereserve@capetown.gov.za

04 DURBANVILLE NATURE RESERVE

Take a stroll through a critically endangered Swartland shale renosterveld and Cape Flats sand fynbos.



Race Course Rd, Durbanville
T 021 979 0060
E durbanville.naturereserve@capetown.gov.za

05 TYGERBERG NATURE RESERVE

Magnificent 360° views of the city. The reserve covers an area of 388 hectares and boasts 562 different plant species. Of these, 23 are threatened, 8 are endemic to Cape Town, and 3 are endemic to Tygerberg itself.



Main gate: 1 Totius St, Welgemoed
T 021 444 8971
E tygerberg.naturereserve@capetown.gov.za

06 INTAKA ISLAND

Award-winning 16ha wetlands and bird sanctuary, home to over 177 species of indigenous fynbos and 120 bird species. It also provides recreational and educational amenities.



2 Park Lane, Grand Central, Century City
T 021 552 6889 E info@intaka.co.za
www.intaka.co.za

07 TWO OCEANS AQUARIUM

Over 8 000 living animals can be seen in this marine kaleidoscope. This is where the two oceans meet! Their Smart Living Challenge Zone encourages visitors to make environmentally conscious decisions and to save water and energy.



Dock Rd, V&A Waterfront
T 021 418 3823
E aquarium@aquarium.co.za
www.aquarium.co.za

08 THE COMPANY'S GARDEN

A green jewel in the heart of a bustling metropolis. It is the remaining half of the Dutch vegetable garden planted in the 1650s and overlaid by a later Victorian 'romantic garden'. In 2014 the Dutch-period Vereenigde Oost-Indische Company (VOC) vegetable and herb garden was re-established. It contains the vegetables originally mentioned in the diary of the garden's founder, Jan Van Riebeeck.



Queen Victoria St, Cape Town T 021 400 2521

